



This publication can be made available upon request in alternative formats and languages.

Materials Recycling and proposals for a new Materials Recovery Facility



Proposed MRF Site

helping to achieve recycling targets

providing jobs for the area

sustainable approach to managing the County's waste



Veolia Environmental Services Plc
Veolia House, 154A Pentonville Road
London N1 9PE
Tel: 020 7812 5000
Fax: 020 7812 5001
info@veolia.co.uk

www.veolia.co.uk

© Veolia Environmental Services 2006

Printed on paper that is 50% recycled, 50% sourced from sustainable forests and totally chlorine free.



the waste strategy

Nottinghamshire County Council will be letting a 26 year Integrated Waste Management Service Contract with Veolia Environmental Services, to commence in June 2006.

The Council's strategy is to provide a more sustainable approach to managing the County's waste with the primary objective to divert waste from landfill and increase recycling and recovery, via:

Reduction
& Reuse
Initiatives

Recycling

Composting

Energy
Recovery

To put the strategy in place, a network of facilities needs to be developed. These include a Composting Facility, a Materials Recovery Facility, an Energy Recovery Facility and Waste Transfer Stations. Remaining local and regional landfill will also be used for any waste that cannot be recovered.

Veolia Environmental Services will be responsible for managing all collected household waste from the seven districts in Nottinghamshire. This includes all the Household Waste Recycling Centres and all compostable, recyclable and general household waste delivered to our facilities.



What you can do to manage your waste sustainably?

Reduce and Reuse



In the first instance reduce where possible the amount of packaging you buy and reuse it if you can before you recycle.

Recycling

Recycling as much as possible of the waste produced in our homes is something everyone can do. The benefits are a reduction in the amount of waste being disposed of and the conservation of natural resources. Recycling household waste can be done in a number of different ways:

Deposit recyclables at your local Bring Banks

Bring Banks are located all over Nottinghamshire and are usually situated near local community facilities such as shops, village halls and in the larger car parks next to supermarkets. Materials that can be recycled at Bring Banks include:

- Paper products – Newspapers and magazines, junk mail, card, cardboard, paper, packaging (clean)
- Glass - bottles and jars only (no Pyrex, mirrors, window panes)
- Food tins and drinks cans - all types (empty and rinsed)
- Plastic bottles - drink, sauce, cooking oil, shampoo and detergent bottles.
- Textiles - clothes, shoes etc.

Use Household Waste Recycling Centres

There are 18 of these located across Nottinghamshire, although numbers will fluctuate as old sites are closed or refurbished and new sites brought on line. As well as accepting most recyclable materials such as those listed previously they also take bulkier items for recycling, such as garden waste, timber, fridges and other electrical appliances, car batteries, scrap metal and fluorescent tubes.

Make use of your local household recycling collection

The local District Councils in Nottinghamshire all operate household recycling collection schemes using wheeled bins or bags. These take a range of materials such as dry recyclables or garden waste. Contact your local Council to find out what they collect. For example Mansfield D.C. provides blue bins to residents for household collections of certain dry recyclables such as paper, card, plastics and cans.

The dry recyclables generated from the household collection schemes will need to be delivered to a Materials Recovery Facility (MRF) to enable the mixed materials to be sorted into different material streams and grades that can be sent to specialist recyclers for reprocessing into new products, for example old newspapers into newsprint.

Do we need this facility?



Currently recyclable materials generated from household collections are moved through a variety of small outlets in and around the County, but these will not be sufficient to meet the anticipated future recycling needs of Nottinghamshire over the longer term.

A new dedicated MRF for Nottinghamshire is therefore required and Veolia Environmental Services is proposing to develop a facility in Mansfield. The MRF will have capacity to process in the region of 85,000 tonnes of recyclables a year and will contribute significantly towards achieving the recycling targets in Nottinghamshire.

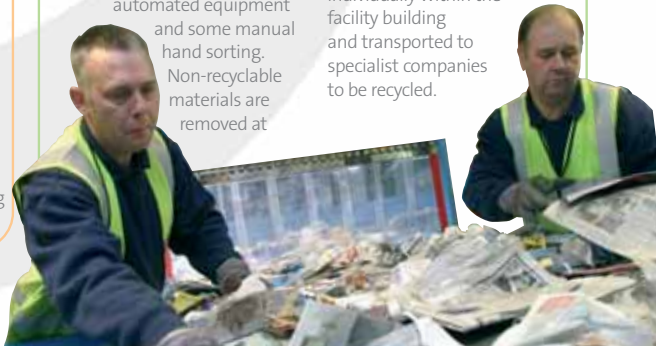
Materials Recovery Facility

The materials recovery process - How it works

The mixed dry recyclables input containing paper, cardboard, cans, and plastic bottles, would be delivered to the site and deposited into a reception area within the MRF building. The materials are then manoeuvred by a loading shovel into the plant, where it is sorted by a mix of mechanical and optical automated equipment and some manual hand sorting. Non-recyclable materials are removed at

various stages of the process to improve end product quality.

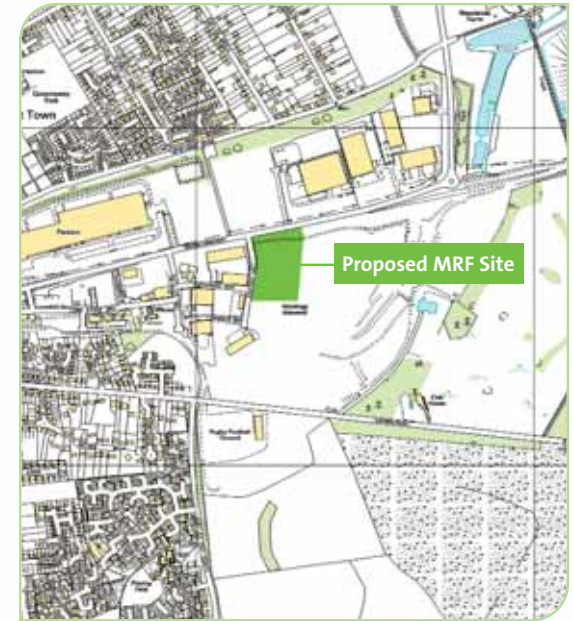
Generally the end products from the sorting process are corrugated cardboard, newspapers and magazines, mixed paper and card, aluminium, ferrous metals and mixed plastics. These products are then bulked up individually within the facility building and transported to specialist companies to be recycled.



The proposed site and development plans for the Materials Recovery Facility

The site selected for development is one of the remaining plots on the Crown Farm Industrial Estate.

This site, in Warren Way, is currently vacant, having been restored following its former use in association with Mansfield Colliery.



©Crown Copyright Terence O'Rourke Ltd AL100017826

The site is bordered to the north by Crown Farm Way, with Warren Way to the west beyond which lies the majority of the Crown Farm Industrial Estate. The eastern boundary of the site abuts the site of the former conical tip, which is in the process of restoration.

The purpose designed processing plant and the materials delivery and collection facilities will be housed in a new building which will enclose the operations. The proposals will also include a separate office and visitor building which will provide facilities for visitors to learn about the MRF operations and Nottinghamshire's Integrated Waste Management Strategy.

The architectural design of the MRF building has concentrated on creating a high quality proposal that will contribute to the Mansfield environment

whilst being sympathetic to its surroundings. Areas of new tree planting will also be provided within the site to help screen the building and vehicle traffic.

The facility will provide jobs for about 40 permanent staff.

Planning and the Environment

An extensive site search was commissioned to find a suitable site for the Materials Recovery Facility. A number of alternative potential locations were examined in terms of their planning and environmental suitability, proximity to the waste and site availability. The study concluded that the former colliery site at Warren Way, provided the most suitable location, being an industrial site, centrally located to the areas from which recyclable waste would be received.

Veolia Environmental Services is now proposing to submit to Nottinghamshire County

Council, (the Waste Planning Authority for the area), a Planning Application for this facility. This is expected to be submitted in mid 2006 and

should planning permission be granted, construction would commence in late 2006 with operations beginning in Summer 2008.



High quality material

Producing consistently high quality material from this type of source separated waste is something with which Veolia Environmental Services has a great deal of experience.

In the UK it currently sends over 200,000 tonnes of recyclable material a year to various reprocessors from the MRFs that it operates for other Local Authorities within the UK.

Specialist studies

Specialist studies have been commissioned to address the issues identified by the scoping exercise in the early stages of the environmental impact assessment. These cover matters such as traffic, visual impact, contamination, ecology, noise, and odour. The results of these studies and proposals for any mitigation measures will be presented in the environmental statement, which will form part of the Planning Application.

Waste Management Licence



Veolia Environmental Services also intends to submit a Waste Management Licence Application soon after the Planning Application.

Waste Management Licences are administered and enforced by the Environment Agency to protect public health and prevent pollution. The application will be accompanied by a Working Plan, which will detail the operations of the facility and the management and environmental controls proposed by Veolia Environmental Services to meet the objectives of the licensing authority.

Both the Planning Authority and the Environment Agency will impose conditions as appropriate and monitor compliance.

Environmental Statement (ES)

The Environmental Impact Assessment Regulations require that for certain types of development, planning applications need to be accompanied by a formal Environmental Statement (ES). This requirement applies to the proposals at Warren Way and an ES will be produced to provide an accurate, objective and comprehensive evaluation of the project and its potential adverse and beneficial environmental effects. The document provides information to:

- The Planning Authority - to assist in making an informed decision about the suitability of the scheme.
- Statutory consultees (e.g. Environment Agency, English Nature, Local Authorities), interested organisations and members of the public - to enable them to respond to the Planning Authority ensuring their views on the project are taken into account.

